



Installation Instructions

Application Fits
2010-2014 Subaru Legacy Sedan
X7205 & X7206
2" & 1.25" EcoHitch Stealth
350lbs Tongue Weight/ 3,500lbs Towing Weight

Torklift Central
315 Central Ave N
Kent, WA 98032
253-854-1832
www.torkliftcentral.com
support@tlcentral.com

Stay Connected



QTY	Fastener
12	1/2" Flat Washer
4	1/2" Lock Washer
4	1/2" Internal Star Lock Washer
4	1/2"-13 Grade 5 Flange Nut
4	1/2"-13 Grade 8 Nut
4	1/2"-13 x 2" Grade 5 Hex Bolt
4	1/2"-13 x 2" Grade 8 Hex Bolt
4	1/2"D-1x2 Plate Washer
1	1/2" Bolt Fisher

READ THESE INSTRUCTIONS THOROUGHLY AND ACCOUNT FOR ALL HARDWARE LISTED BEFORE BEGINNING INSTALLATION!

Step 1. Raise the rear of vehicle off of the ground and place on ramps, suitable jack stands, or a lift.

Step 2. Remove the rear combination tail light assembly on both driver and passenger sides by disconnecting the light harness behind the trunk wall lining and then removing the(4) 8mm nuts. Carefully slide the light housing rearward of the vehicle. See Figure [1].

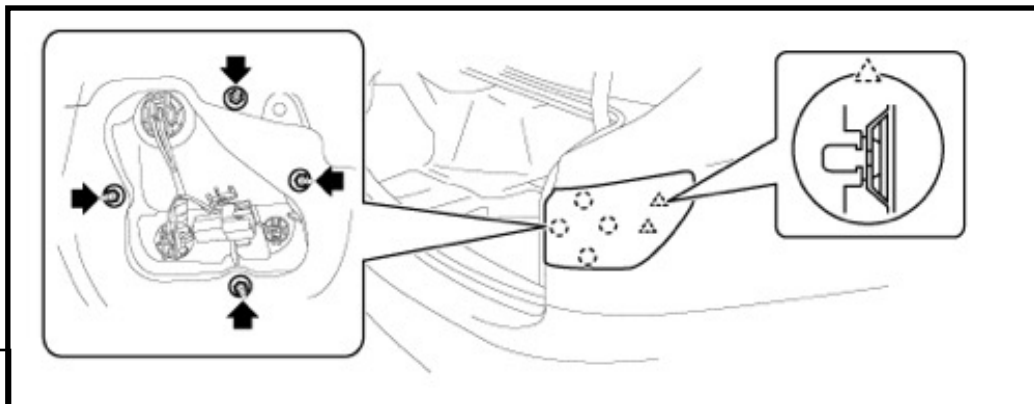


Fig. [1]

Step 3. Remove the (5) push pin clips from the lower bumper panels and both driver and passenger side fender wells.

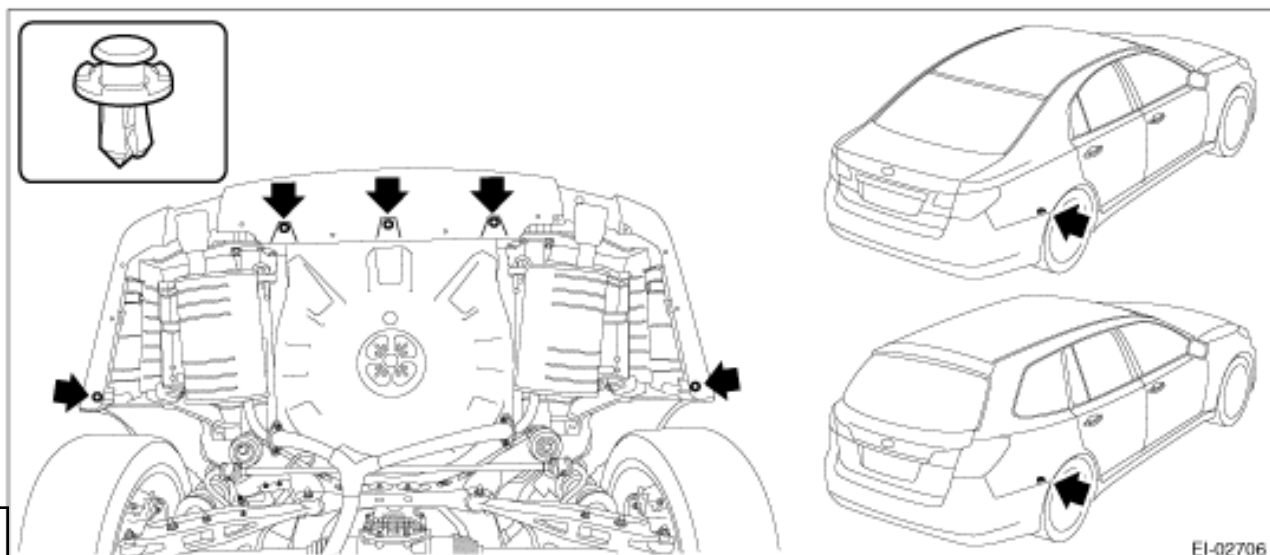


Fig. [2]

Step 4. Starting at the (b) passenger side, begin to gently peel the bumper fascia off the vehicle. Work your way slowly around toward the rear of the vehicle, then move to driver side and repeat the same process. With both the passenger and driver side disengaged, begin pulling the bumper fascia rearward to finish removal.

See Figure [3].

NOTE: It may be helpful to have assistance to hold the bumper fascia during removal so it does not become damaged.

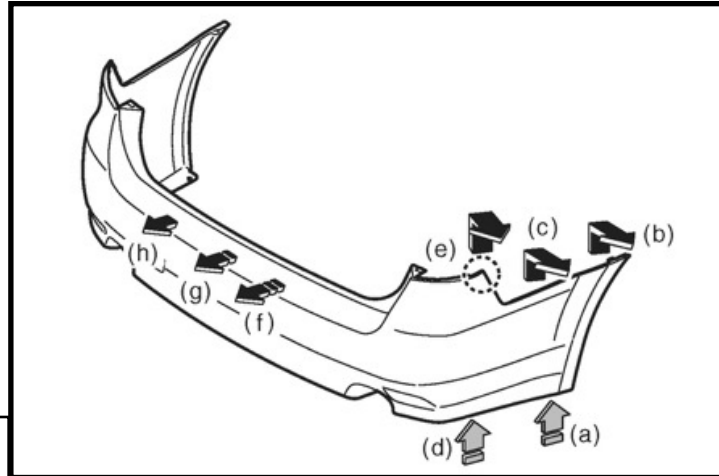


Fig. [3]

Step 5. Remove the impact bar by removing the (8) nuts securing it to the vehicle. See Figure [4].

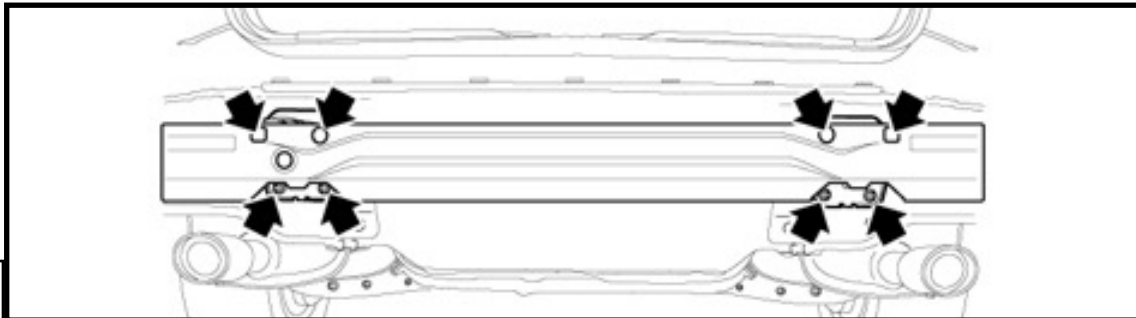


Fig. [4]

Step 6. Disconnect the (3) rubber exhaust hangers by using a lubricant such as WD-40 or equivalent. Support the exhaust system with stands to avoid damage.

See Figures [5] & [6].

DO NOT ALLOW THE EXHAUST TO HANG FREELY.

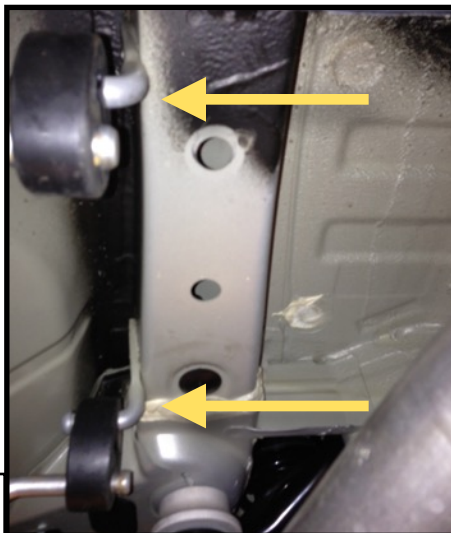


Fig. [5]

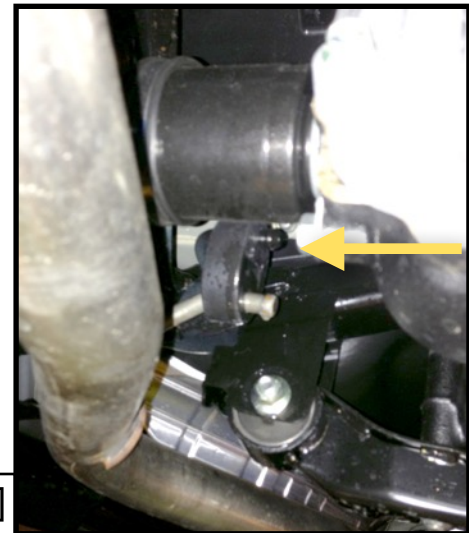


Fig. [6]

Step 7. Remove the (2) frame rail plugs shown in Figure [7] and discard. Repeat for driver side.

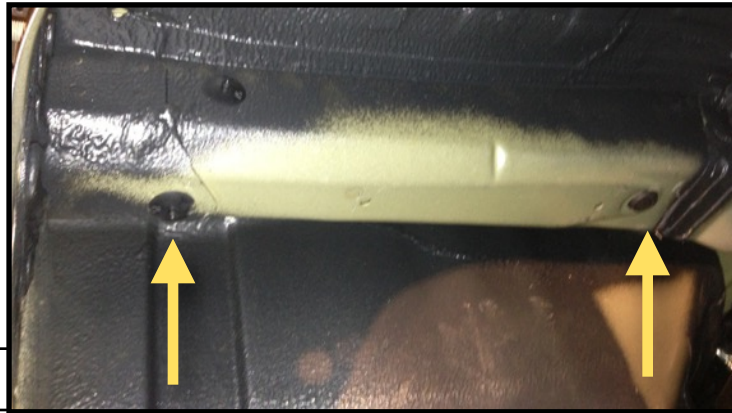


Fig. [7]

Step 8. With the plugs removed, feed the coil end of the bolt fisher up through the forward most hole of the passenger side until it comes out at the rear of the frame rail. Attach a 1/2" x 2" hex cap bolt with a 1/2" internal tooth lock washer and 1x2 plate washer. With all hardware assembled on the bolt fisher, pull the bolt fish wire to move the hardware into place. Repeat on remaining hole and on driver side. See Figure [8] for reference.

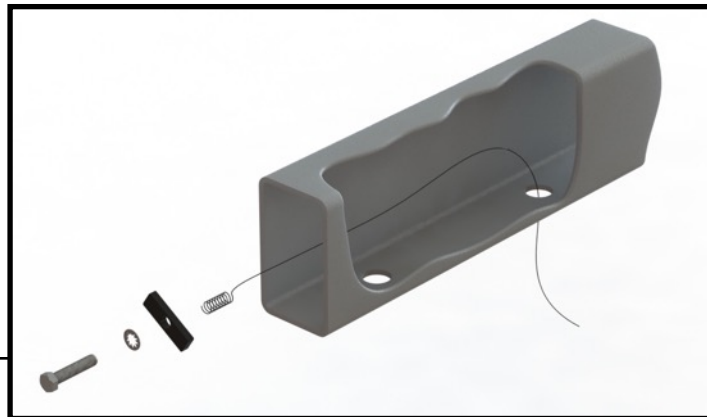


Fig. [8]

Step 9. Take the passenger side hitch frame plate and place onto bolts in frame rails. Be cautious not to push the 1/2" bolts back into the frame rails. With the hitch frame plate in place on the bolts, secure with (1) 1/2" flat washer and (1) 1/2" Grade 5 flange nut and hand tighten. Repeat on remaining bolt and driver side bolts. Do not torque at this time. See Figure [9].

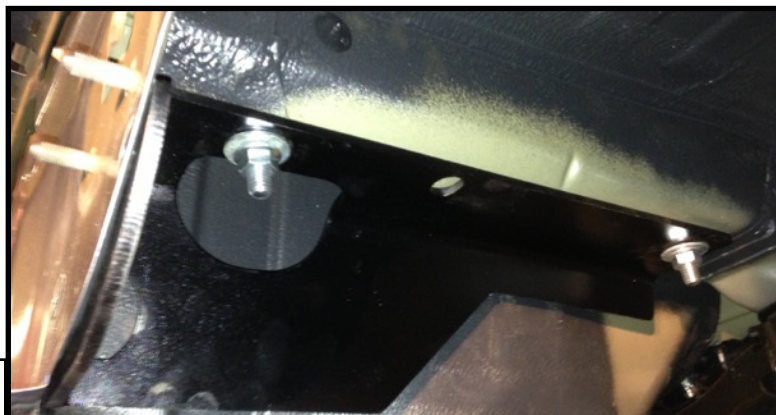


Fig. [9]

Step 10. Locate the thin metal center push pin tab on the rear of the vehicle and bend downward or remove altogether to make room for the hitch cross tube. See Figure [10] for location reference.

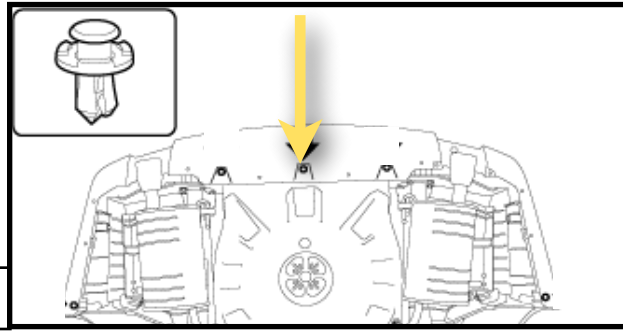


Fig. [10]

Step 11. Take the hitch cross tube and place into position by lining up the holes in the cross tube with the holes in the frame plates as shown in Figures [11] & [12]. Take (1) 1/2" x 2" Grade 8 bolt, (1) 1/2" flat washer, and place bolt through hole. On the back side, secure with (1) 1/2" flat washer, (1) 1/2" lock washer, and (1) 1/2" Grade 8 nut and hand tighten. Repeat process for remaining holes on cross tube. Once all bolts are hand tightened, torque all frame and cross tube bolts to 75 ft-bs.



Fig. [11]



Fig. [12]

Step 12. Mark the bumper fascia for trimming. For 1.25" (X7206) models, center tape measure at 3" on center of tab. For 2" (X7205) models, center tape measure at 3.5" on center tab. Use an air saw or sharp utility knife to trim the lower bumper fascia. For vertical cut, trim up to the bend in the bumper fascia. See Figure [13].

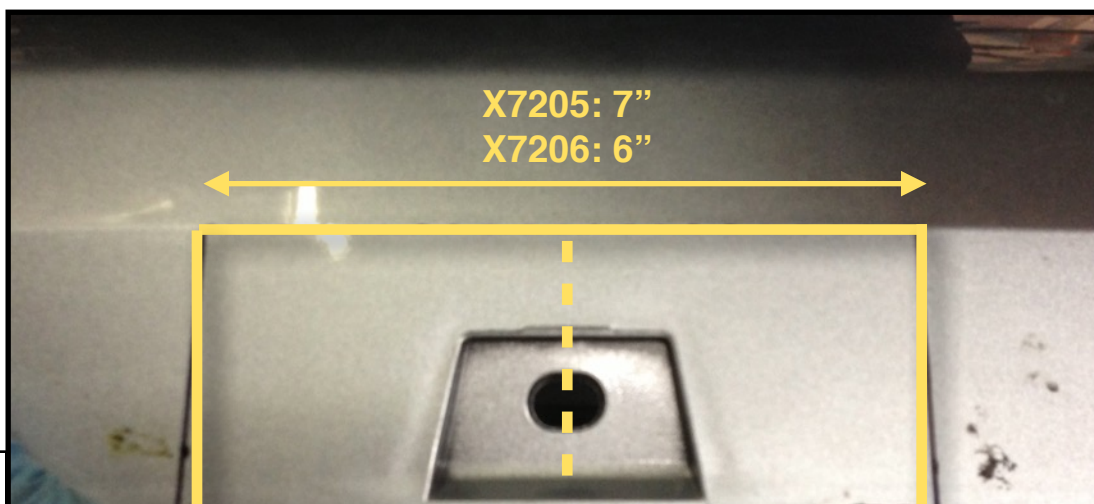


Fig. [13]

Step 18. Re-install the impact bar and torque bolts to 33 ft. lbs.

Step 19. Re-install bumper fascia by following removal steps in reverse starting at Step 4.

Congratulations on the completed installation of the Subaru Legacy Stealth EcoHitch! It is designed with a lifetime warranty for a lifetime of enjoyment. If you have any questions or suggestions please contact our tech support at support@tlcentral.com or by phone at (253)-854-1832.



WARRANTY/DISCLAIMER INFORMATION

Torklift Central requires proof of purchase for warranty claim registration, with pictures of any defective product before issuing a replacement. Torklift will not accept claims on any product without proof of purchase, which can be faxed, scanned, emailed or mailed to the information provided below. Torklift Central warrants its hitches, custom hitch receivers and accessories (excluding electrical wire harnesses which carry a warranty from their specified manufacturer) from date of purchase against defects in material and workmanship under normal use and service for the ownership life of the original consumer purchaser. Torklift Central will replace free of charge any part that proves defective in material or workmanship when presented to Torklift Central, transportation charges prepaid by purchaser, at the address below. **This warranty is limited to defective parts replacement only. Labor charges and/or damage incurred in installation or replacement, as well as incidental and consequential damages connected therewith are excluded.** This warranty does not include normal wear and tear or the finish and paint. Rusting, cracking or peeling of the finish is also excluded. Some states do not allow the exclusion or limitation of incidental or consequential damages, so the above limitation or exclusion may not apply to you. Any damage to Torklift Central products as a result of misuse, abuse, neglect, accident, improper installation or any use violative of instructions furnished by Torklift Central will void the warranty. This warranty gives you specific legal rights and you may also have rights, which vary from state to state. With warranty service, you may be able to go to a small claims court, a state court or a federal district court.

Although Torklift Central trailer hitches are both tested and rated for towing within the specific capacity label found on each trailer hitch. Torklift Central assumes no liability for vehicle manufacturers warranty due to the use of a Torklift Central trailer hitch being used for towing behind any vehicle or using the trailer hitch in a manner that it was not designed for. Although this specific trailer hitch has a load rating, which includes trailer tongue weight, and a trailer weight carrying capacity, Torklift Central is not responsible for the voiding of any warranty on any vehicle due to factory towing limitations. All vehicle warranties are the sole property and responsibility of the owner of the vehicle that the Torklift Central trailer hitch is installed upon. Torklift Central does not endorse towing behind any vehicle if the vehicles manufacturer states that towing is not recommended. Check your vehicle's owner's manual for the proper tow rating of your vehicle.

ADDRESS: 315 Central Ave N. Kent, WA 98032

WARNING Your vehicle may have a lower tow rating than this trailer hitch. If your vehicle's tow rating is less than the rated towing capacity on your Torklift Central trailer hitch, your trailer hitch capacity is limited to your vehicle's factory rated towing capacity.

FOR EXAMPLE: the label on your Torklift Central trailer hitch states it's capacity is rated for 500 pounds tongue weight and 5,000 pounds towing weight. However your vehicle's factory rated towing capacity is limited to only 350 pounds tongue weight and 3,500 pounds towing weight. In this example your maximum towing capacity of your Torklift Central trailer hitch is limited to 350 pounds tongue weight and 3,500 pounds towing weight as stated by your vehicle's maximum factory tow rating.

DANGER Never exceed your vehicle's manufacturer's recommended towing capacity which may be a lower rating than this trailer hitch

Unsure of your tow rating? Download our towing app from the app store to find your vehicles tow rating.
www.torkliftcentral.com/app.php